



INSTRUCTION BULLETIN

No. 340754
Machine: T7, SSR
Published: 03-2019
Rev. 01

NOTE: DO NOT DISCARD the Parts List from the Instruction Bulletin. Place the Parts List in the appropriate place in the machine manual for future reference. Retaining the Parts List will make it easier to reorder individual parts and will save the cost of ordering an entire kit.

NOTE: Numbers in parenthesis () are reference numbers for parts listed in Bill of Materials.

Installation instructions for **kit number 9000139**

SYNOPSIS / PROBLEM:

This kit contains the parts needed to install a 650 mm squeegee onto the T7/SSR model scrubbers. Please follow step-by-step instructions.

SPECIAL TOOLS / CONSIDERATIONS: NONE

(Estimated time to complete: 1 hour)

PREPARATION:

1. Stop machine on a clean level surface.
2. Raise the scrub head to the raised position.
3. Turn off the machine and remove the key.

FOR SAFETY: Before leaving or servicing machine, stop on level surface, and turn off the machine.

INSTALLATION:

1. Remove the vacuum hose from the rear squeegee assembly. Refer to Fig. 8.
2. Remove the knobs holding the rear squeegee assembly onto the lower squeegee channel arm. Refer to Fig. 1.

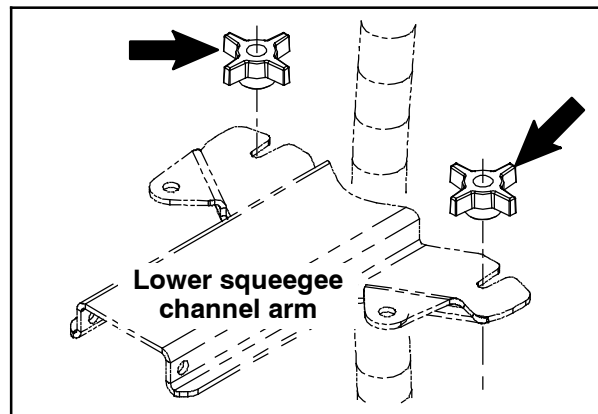


FIG. 1

3. Remove the rear squeegee assembly from the machine.

NOTE: For the remainder of this Instruction Bulletin, refer to Fig. 8 for additional information pertaining to part locations and orientation on the squeegee assembly.

4. Use the provided hex screws (8), flat washers (9), sleeves (10), and hex nuts (11) to install bumper wheels (7) onto both ends of the new squeegee frame (1). Refer to Fig. 2.

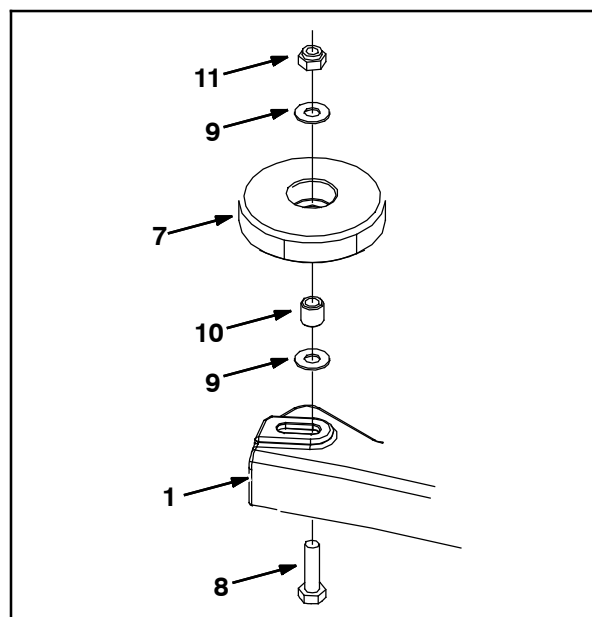


FIG. 2

5. Use the two provided star knobs (3) to install the new squeegee retainer plate (2) onto the squeegee frame (1). Do not tighten star knobs. Refer to Fig. 3.

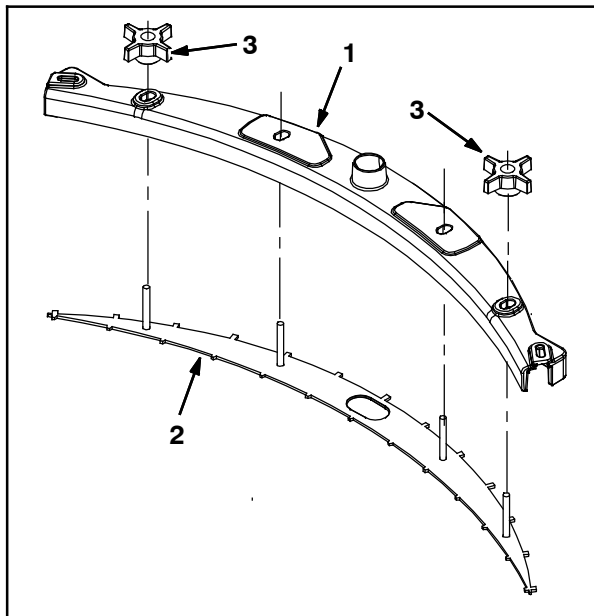


FIG. 3

6. Install the new front squeegee blade (4) onto the squeegee retainer plate (2). Be sure the holes in the front squeegee blade are hooked onto the squeegee retainer plate tabs. Refer to Fig. 4.

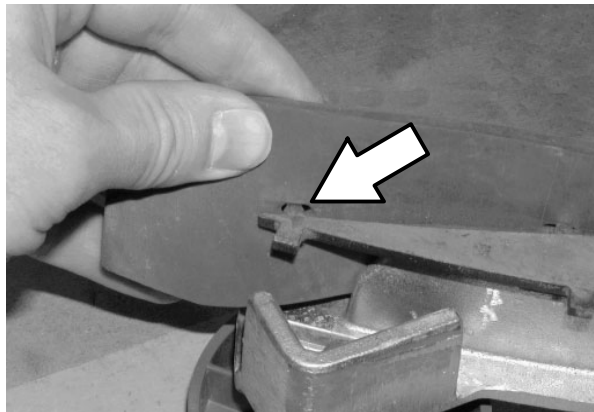


FIG. 4

7. Slightly tighten the two star knobs (3). Refer to Fig. 3.

8. Install the new rear squeegee blade (5) onto the squeegee retainer plate (2). Be sure the holes in the rear squeegee blade are hooked onto the squeegee retainer plate tabs. Refer to Fig. 5.

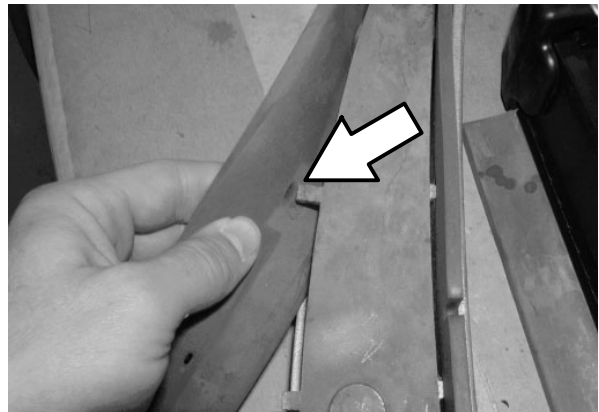


FIG. 5

9. Slide the squeegee strap assembly (6) into the squeegee frame (1). Seat the squeegee strap assembly flanges inside the retainers on squeegee frame. Refer to Fig. 6.

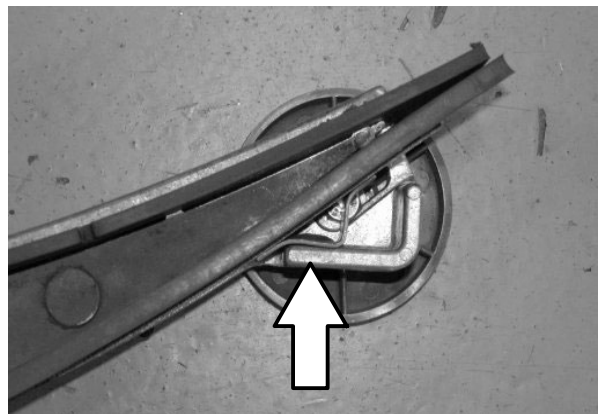


FIG. 6

10. Tighten the squeegee strap assembly (6) tension latch. Refer to Fig. 7.

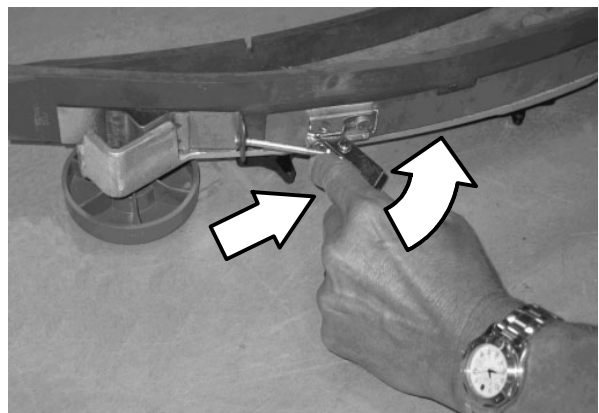


FIG. 7

11. Tighten the star knobs (3) to secure the squeegee retainer plate (2) into place inside the squeegee frame (1). Refer to Fig. 8.

12. Use the two remaining star knobs (3) to install the squeegee assembly onto the lower squeegee channel arm. Refer to Fig. 8.

13. Install the vacuum hose onto the rear squeegee assembly. Refer to Fig. 8.

14. Test machine to ensure the rear squeegee functions properly.

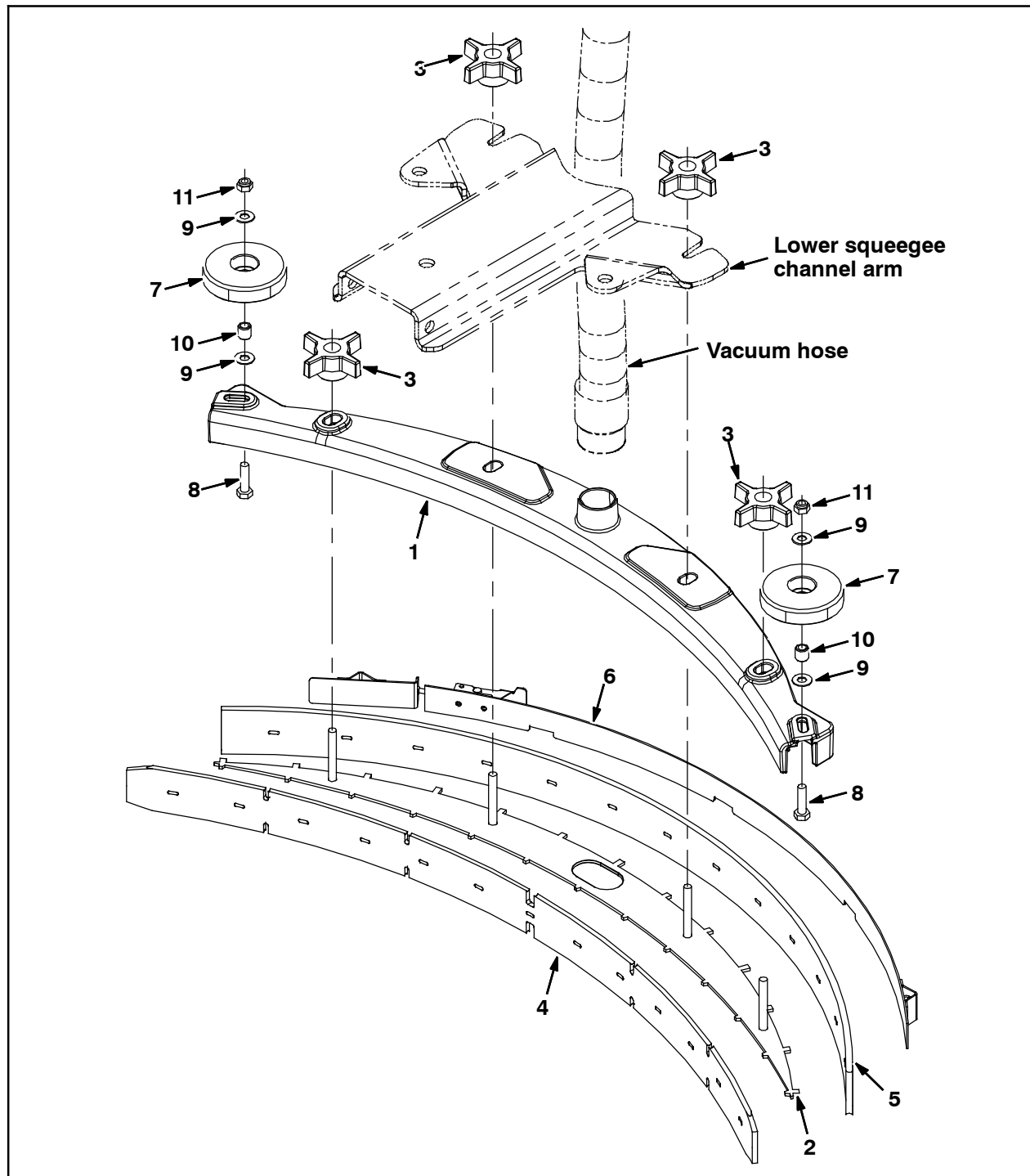


FIG. 8

Bill of Materials for Kit, Cl, Squeegee [650 mm]- 9000139

	Ref.	Tennant Part No.	Description	Qty.
▽		9000139	Kit, Cl, Squeegee [650 mm]	1
▲	1	1001468	Frame, Sqge, 700mm	1
▲	2	1012934	Plate Wldt, Sqge, Retainer, 700mm	1
▲	3	1074204	Knob, Star, 2.75D 4Ear 1.1L M8 X 1.25 Thru, Y	4
▲	4	390943	Blade, Sqge, Front, 700mm Linatex, 35.0L	1
▲	5	390942	Blade, Sqge, Rear, 700mm Linatex [37.5L]	1
▲	6	1245861	Strap Assy, Sqge, 700mm [T7/T7Amr], Yl	1
▲	7	1010560	Wheel, Bmpr, 80D X 25W, Non- marking	2
▲	8	09011	Screw, Hex, M8 X 1.25 X 30, SS	2
▲	9	140027	Washer, Flat, 0.35B 0.75D .04, SS	4
▲	10	222460	Sleeve, P/M, 0.496D 0.318B 0.50L 430SS	2
▲	11	08713	Nut, Hex, Lock, M8 X 1.25, NL, SS	2

TENNANT COMPANY
P. O. Box 1452
Minneapolis, MN 55440-1452